



# StreetSync™ Pro

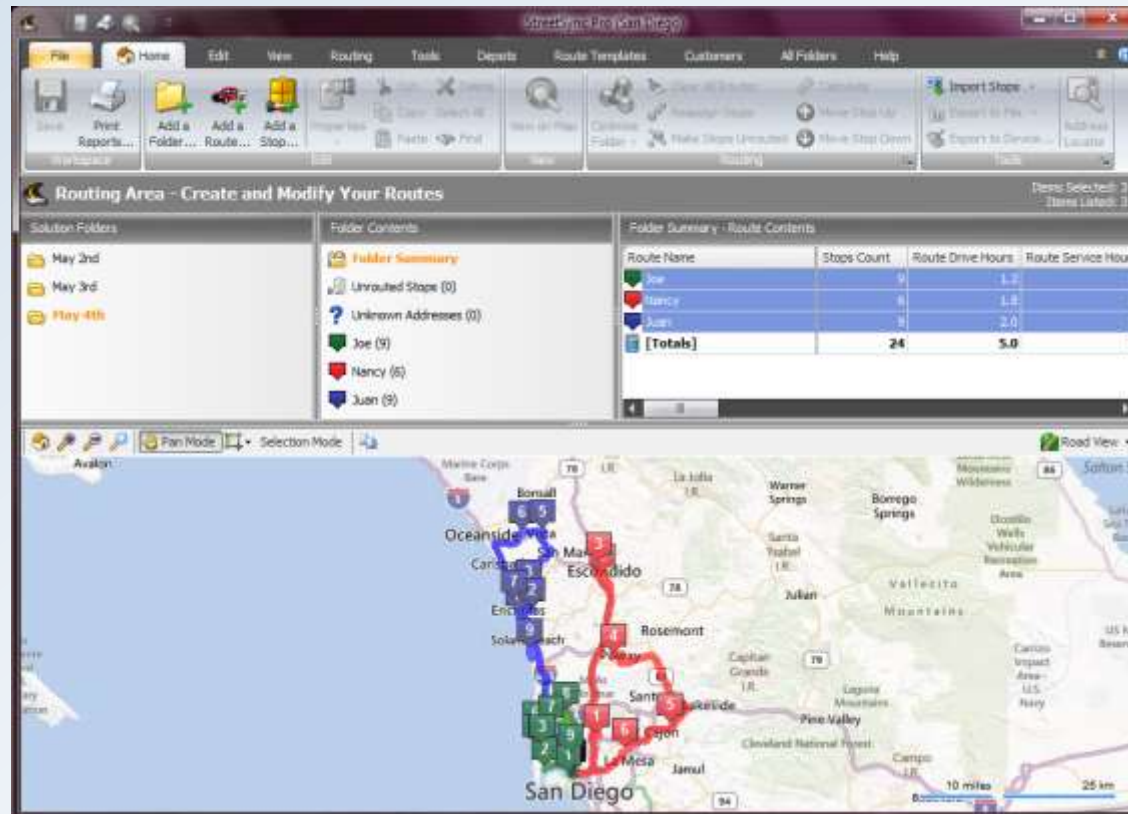
Vehicle Routing Made Easy

# The Business Case – ROI

- If you have a fleet of vehicles, and save only a few % on your overall fleet costs, StreetSync Pro can pay for itself in a matter of weeks
- Decrease time spent building route plans (no more Thomas Guide, zip code-sorted stacks, spreadsheet hacks, white board or wall map routing)
- Your fleet drives FEWER miles overall due to proper planning and driver reports and GPS guidance
- Improved customer service
- Fully integrated route optimization and connected navigation to GPS and smartphone devices

# StreetSync™ Pro Overview

- StreetSync is a tool to allow you to optimize and view multi-vehicle and multi-day route plans



# StreetSync™ Pro Benefits

- Computerized Route Planning typically saves 5-30% on total logistics costs (fuel, labor, maintenance, equipment, etc).
- Save money and time on the roads and in your dispatching office and plan your routes in a matter of minutes.

## Customer Feedback:

“I no longer have to (...) route over 100 locations a month by looking at a map. I can just put the addresses in and it's ready to go. Simple. It saves me a lot of time.”

- CRI Recycling Service

“We've saved 40% on direct delivery operation costs (...). Our time to recoup investment was about 2 weeks.”

- Fit Fresh Philly, LLC

“Our overtime costs have dropped by more than 70%, fuel usage is down 11% and the frustration factor of our drivers has diminished greatly.”

- Deliveries Inc.

“ It's a huge time saver. You can make informed decisions quickly and confidently so you can increase productivity and revenue.”

- Double G Delivery

# Manual Planning vs. StreetSync



Before: 217.9 miles



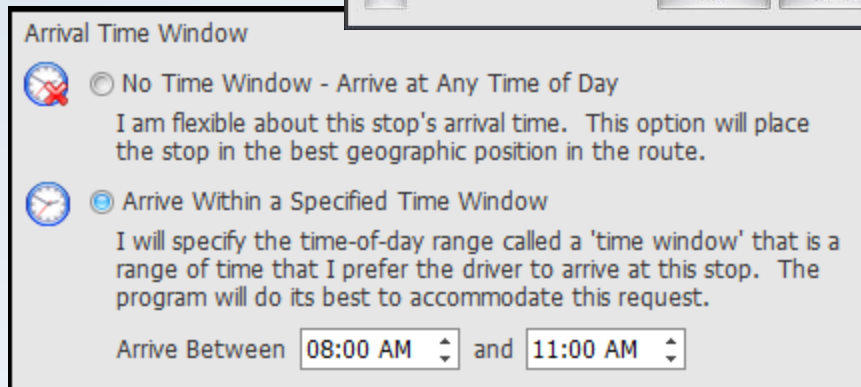
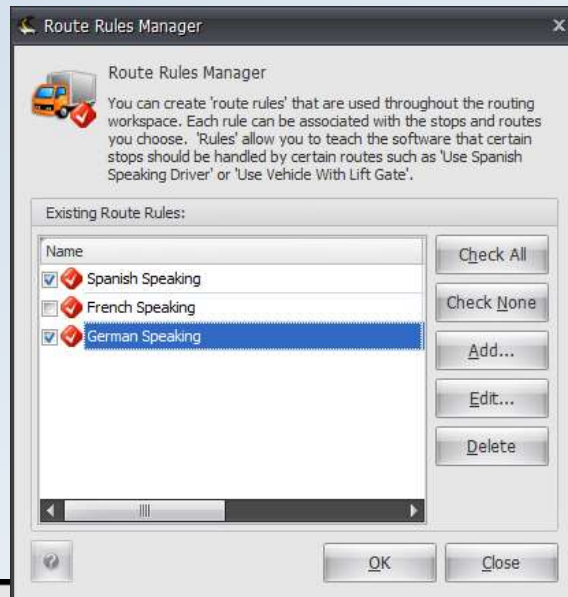
After: 162.7 miles

We compared the manual planning from an experienced dispatcher of a wine delivery company with the optimization results from StreetSync Pro. In just one day the company could reduce the driver's miles driven by ~55 miles. Even though the dispatcher was aware of the geography and requirements, the computer solution is much better when it comes to efficiency and optimization. Proper route optimization saves you miles driven, reduces labor hours, improves customer satisfaction through meeting arrival times, and more!

# About StreetSync™ Pro

- StreetSync Pro provides affordable and powerful multi-vehicle routing for fleets of various sizes
- Cluster your routes to avoid overlap and balance workloads between drivers
- Handle business rules such as time windows, capacities, driver workday skills and schedules, etc.
- Partition your workload easily on several drivers
- Efficiently sequence routes to avoid extra miles
- Add new stops and assign them to the best existing route
- Import and export to and from common file formats
- Print numerous reports including turn-by-turns
- Export routes to your GPS devices and smartphones
- Integrate with TomTom WORKsmart to track your vehicles

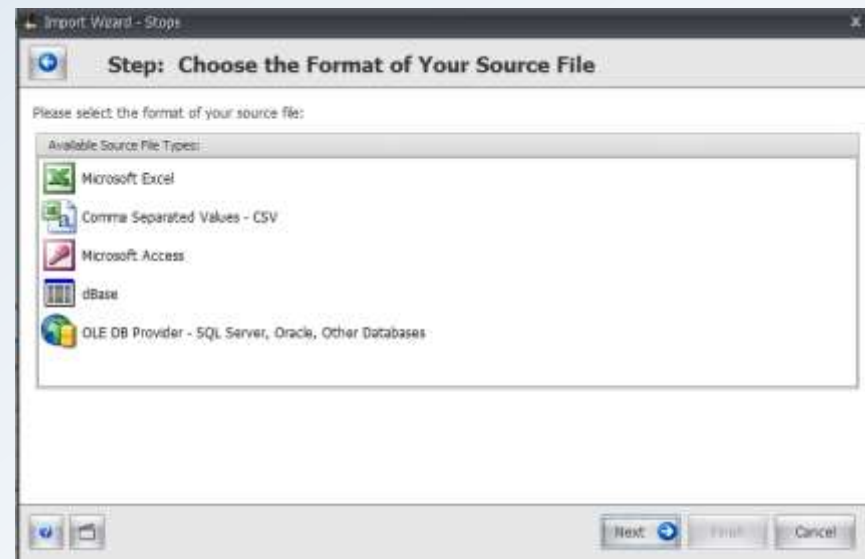
# Business Rules Are Handled



- Arrival time windows
- Limit routes on quantity handled
- Limit route miles/KMs
- Limit route stops
- Limit route length and overtime length
- Route with 'rules' such as driver or route capabilities

# Working With Your Data

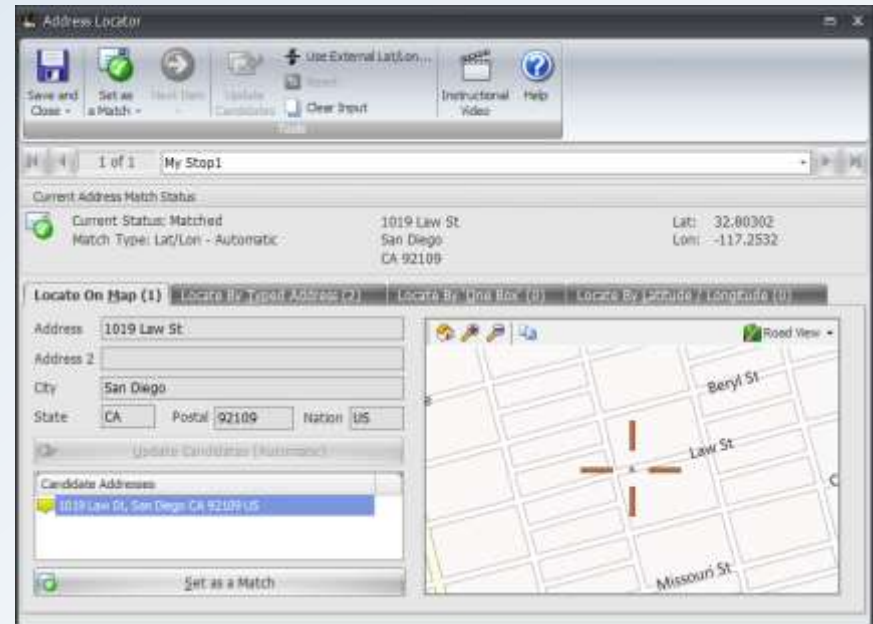
- StreetSync is able to import and export your data via popular programs such as MS-Excel, Access, SQL Server, .csv, Oracle, etc.
- Connect directly to your existing database via OLE DB/ODBC
- A full customer database is included to allow you to save information for the long-term





# Locating Your Customers

- StreetSync has built-in tools to let you find your customers on the map. It offers address candidates and lets you pick your stop on the map
- Use accuracy to improve driver efficiency and boost your customer satisfaction



# Building Routes

- You can build routes and sequences for multiple vehicles simultaneously in StreetSync and save time planning your routes
- Reduce overall miles driven by reducing driver overlap and introducing optimal sequencing
- Balance partitions based on shortest time, shortest miles or number of stops.



# Routing Results and Editing

- Built routes are clearly displayed both in a List View and also on the map display
- Turn-by-turn directions are generated
- Routes can be edited, added to, removed etc
- Inserted stops can be assigned to a recommended route



Reassign Selected Stop(s)

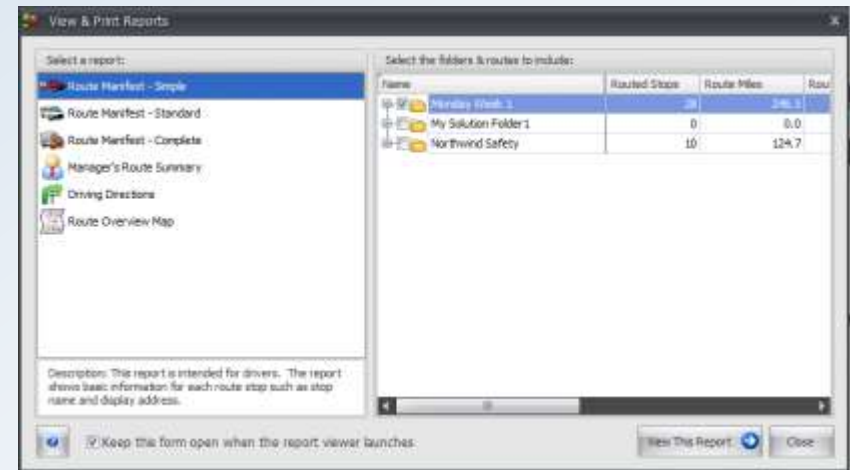
Solution Folders to Reassign Stops To: May 4th

Name	Dist to Closest Stop	Dist to Route Center	Stops Count	Capacity Utilizat...	Route Hours	Route Miles	Route
Unrouted Area							
Nancy	6.9 Miles	12.5 Miles	6	44 %	2.0	91.3	
Juan	18.5 Miles	21.5 Miles	9	98 %	2.3	90.2	

OK Cancel

# Exporting and Reporting

- Routed data can be exported to various formats such as Excel, .csv, XML, and more.
- Exported data includes Route, Sequence, ETA, X & Y Coordinates, etc.
- Full printable driver reports
- Export to many navigation devices



# StreetSync™ Pro Highlights

- Save money and time by optimizing routes via balancing, clustering and sequencing stops
- Handle business rules like time windows, etc.
- Easily imports your data from various formats
- Includes an address locator form to correctly map client addresses
- Export your optimized routes to certain navigation devices including TomTom WORKsmart
- Routing data can be exported to Excel including data such as: Route, Sequence, ETA, X & Y Coordinates, and more

# Contact RouteSolutions Inc.

Please contact RouteSolutions to learn more or start a no-cost evaluation!

Website: [www.routesolutions.com/streetsyncpro.htm](http://www.routesolutions.com/streetsyncpro.htm)

Email: [info@routesolutions.com](mailto:info@routesolutions.com)

Phone: 858.541.2738

[Live-Chat](#)