



StreetSync™ Vehicle Routing System

Vehicle Routing Made Easy

The Business Case – ROI

- If you have a fleet of vehicles, and save only a few % on your overall fleet costs, StreetSync can pay for itself in a matter of weeks
- Decrease time spent building route plans (no more Thomas Guide, zip code-sorted stacks, spreadsheet hacks, white board or wall map routing)
- Your fleet drives FEWER miles overall due to proper planning and driver reports and GPS guidance
- Improved customer service
- Fully integrated route optimization and connected navigation to GPS and smartphone devices

StreetSync™ Interface

- Plan and view multi-vehicle routes on screen

The screenshot displays the StreetSync Desktop 6 software interface. The title bar reads "StreetSync Desktop 6 (Sample 2 - Routing With Capacities-2711731)". The interface is divided into several sections:

- Routing Area - Create and Modify Your Routes:** This section contains a sidebar with folders like "Routing with Capacities" and "Routing with Capacities-1".
- Table Summary - Route Capacity:** A table showing route details. The columns are: Route Name, Stops Count, Route Drive Hours, Capacity Used, Route Service Hours, Route Total Hours, Route Mile, Route Mile Cost, Capacity Utilized, Capacity Available, and Start Depot.
- Map:** A map showing the geographic distribution of routes, with different colors representing different routes.

Route Name	Stops Count	Route Drive Hours	Capacity Used	Route Service Hours	Route Total Hours	Route Mile	Route Mile Cost	Capacity Utilized	Capacity Available	Start Depot
[Total]	300	22.1	14005.0	20.9	42.1	586.8	253.36	93 %	15000.0	
Van 1	40	3.3	1840.0	2.8	6.1	113.7	46.12	54 %	3000.0 My Depot	
Van 2	42	4.9	2100.0	3.0	7.9	131.2	55.61	78 %	3000.0 My Depot	
Van 4	77	3.4	1300.0	5.0	8.4	73.7	30.03	11 %	3000.0 My Depot	
Van 5	81	2.9	2600.0	5.4	8.3	48.7	24.05	131 %	3000.0 My Depot	

StreetSync™ Benefits

- Computerized Route Planning typically saves 5-30% on total logistics costs (fuel, labor, maintenance, equipment, etc).
- Save money and time on the roads and in your dispatching office and plan your routes in a matter of minutes.

Customer Feedback:

“I no longer have to (...) route over 100 locations a month by looking at a map. I can just put the addresses in and it's ready to go. Simple. It saves me a lot of time.”

- CRI Recycling Service

“We've saved 40% on direct delivery operation costs (...). Our time to recoup investment was about 2 weeks.”

- Fit Fresh Philly, LLC

“Our overtime costs have dropped by more than 70%, fuel usage is down 11% and the frustration factor of our drivers has diminished greatly.”

- Deliveries Inc.

“ It's a huge time saver. You can make informed decisions quickly and confidently so you can increase productivity and revenue.”

- Double G Delivery

Manual Planning vs. StreetSync



Before: 217.9 miles



After: 162.7 miles

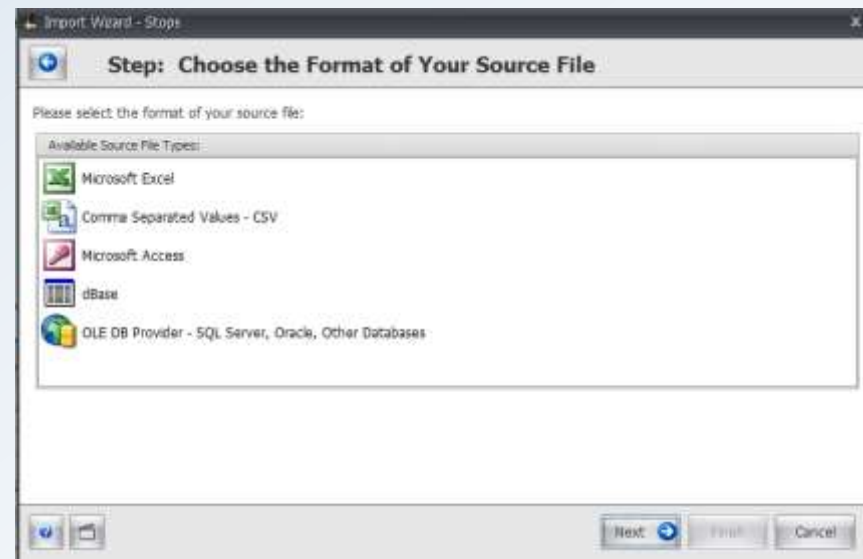
We compared the manual planning from an experienced dispatcher of a wine delivery company with the optimization results from StreetSync. In just one day the company could reduce the driver's miles driven by ~55 miles. Even though the dispatcher was aware of the geography and requirements, the computer solution is much better when it comes to efficiency and optimization. Proper route optimization saves you miles driven, reduces labor hours, improves customer satisfaction through meeting arrival times, and more!

About StreetSync™

- StreetSync Pro provides affordable and powerful multi-vehicle routing for fleets of various sizes
- Cluster your routes to avoid overlap and balance workloads between drivers
- Partition your workload easily on several drivers
- Efficiently sequence routes to avoid extra miles
- Add new stops and assign them to the best existing route
- Import and export from common file formats
- Print numerous reports including turn-by-turns
- Export routes to your GPS and smartphone devices
- Integrate with TomTom WORKsmart to track your vehicles

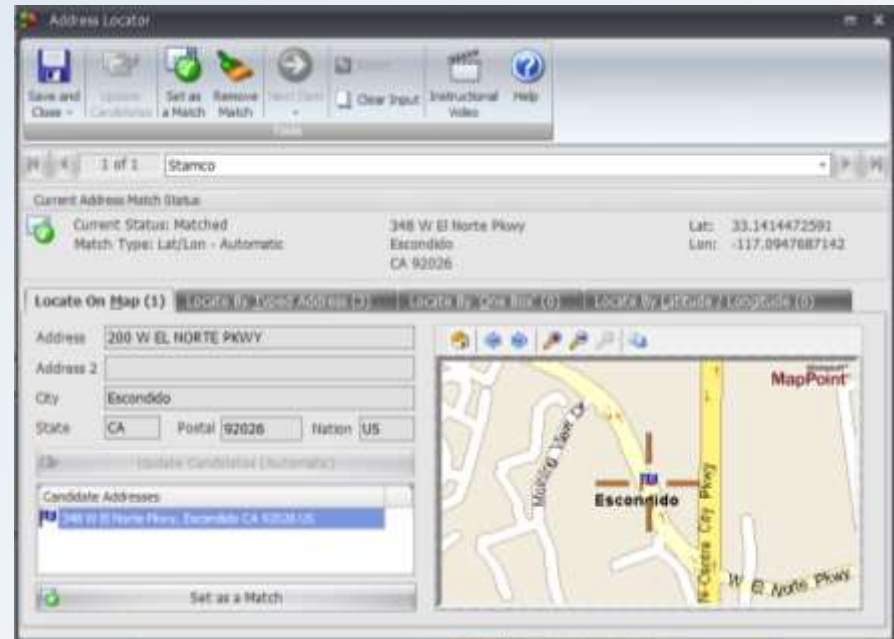
Working With Your Data

- StreetSync is able to import and export your data via popular programs such as MS-Excel, Access, SQL Server, .csv, Oracle, etc.
- Connect directly to your existing database via OLE DB/ODBC
- A full customer database is included to allow you to save information for the long-term



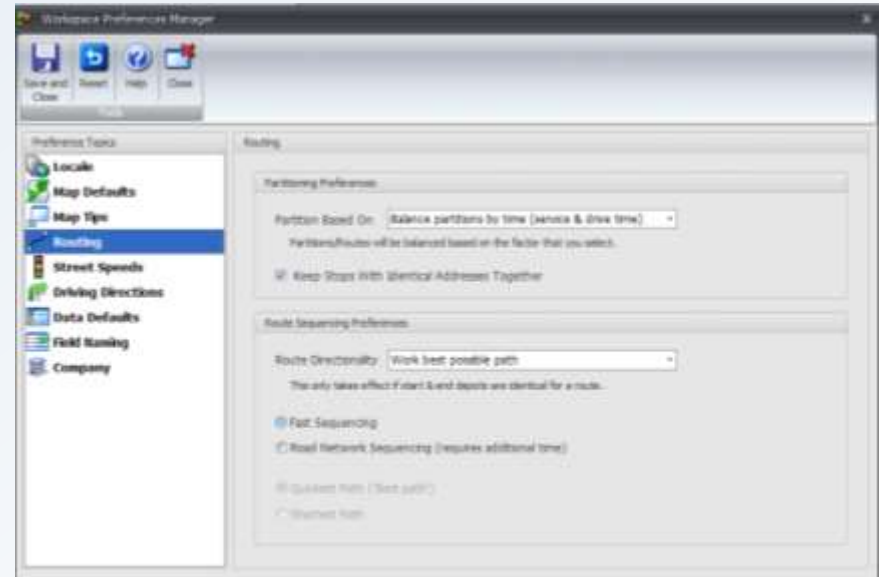
Locating Your Customers

- StreetSync has built-in tools to let you find your customers on the map. It offers address candidates and let's you pick your stop on the map
- Use accuracy to improve driver efficiency and boost your customer satisfaction



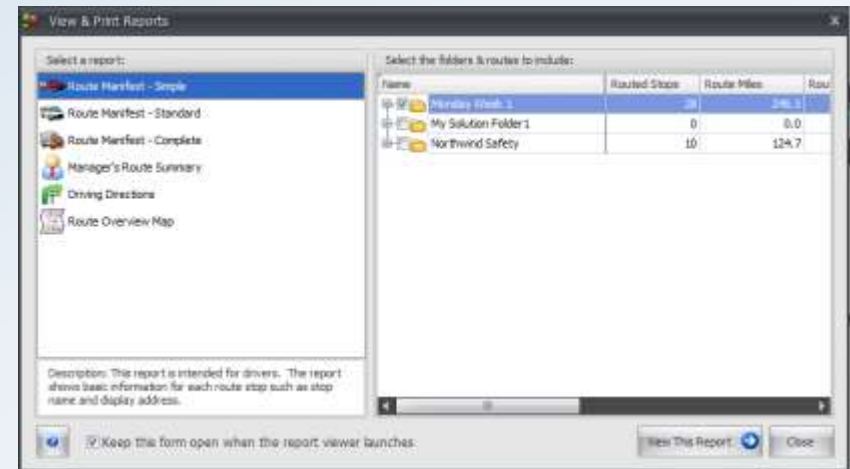
Building Routes

- You can build routes and sequences for multiple vehicles simultaneously in StreetSync and save time planning your routes
- Reduce overall miles driven by reducing driver overlap and introducing optimal sequencing
- Balance partitions based on shortest time, shortest miles or number of stops.



Exporting and Reporting

- Routed data can be exported to various formats such as Excel, .csv, XML, and more.
- Exported data includes Route, Sequence, ETA, X & Y Coordinates, etc.
- Full printable driver reports
- Export to many navigation devices



Product Highlights

- Routing data can be exported to Excel including data such as: Route, Sequence, ETA, X & Y Coordinates, and more
- Easily integrates with your existing client data
- Includes an address locator form to correctly map client addresses
- Optimizes routes by balancing, clustering and sequencing stops
- Export your optimized routes to certain navigation devices
- StreetSync already integrates with TomTom Work

Contact RouteSolutions Inc.

Please contact RouteSolutions to learn more or start a no-cost evaluation!

Website: www.routesolutions.com/streetsync.htm

Email: info@routesolutions.com

Phone: 858.541.2738

[Live-Chat](#)