



# StreetSync™ Basic

Vehicle Routing Made Easy

# Routing Software Benefits

- Computerized route planning typically saves 5-30% on total logistics costs (fuel, labor, maintenance, equipment, etc).
- Save money and time on the roads and in your dispatching office and plan your routes in a matter of minutes.

## Customer Feedback:

“Over a six month comparison we achieved a month over month reduction in miles of 31%, reduced overtime by 4%, and saved \$3,500 on fuel costs.”

- Walco International

“ It pays for itself in 2 days with the money that we save on gas. I would highly recommend it.”

- CNB Property Service

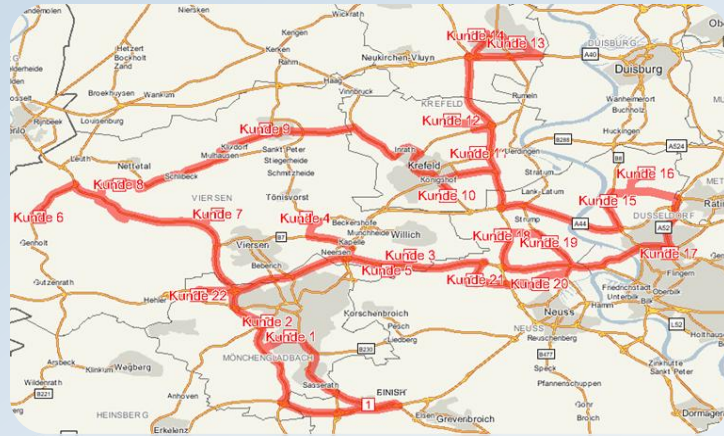
“Our routes are much more efficient with much less backtracking. StreetSync plots out our delivery routes each day and literally saves me at least 30 minutes of planning time and probably another 30-45 minutes of driving time per day.”

- Nature's Select

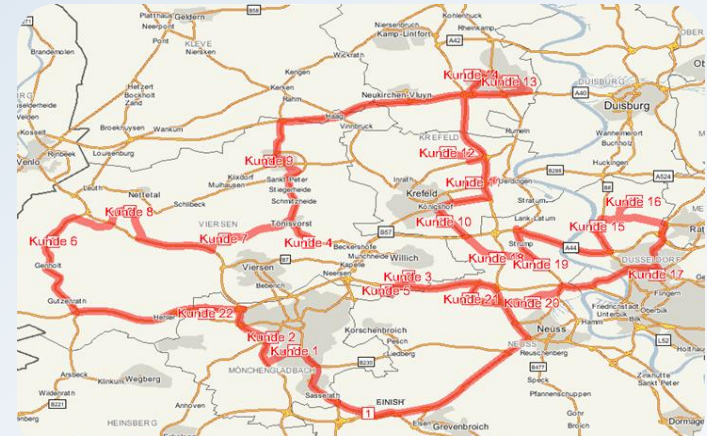
“StreetSync Basic has been in use for over a year. StreetSync made it easy for us to make changes and accommodate our clients needs.”

- Retail Sports Marketing

# Manual Planning vs. StreetSync



Before: 217.9 miles



After: 162.7 miles

We compared the manual planning of an experienced dispatcher of a wine delivery company with the route calculations of StreetSync. In just one day the company could reduce the drivers miles from 217 to 162 miles and save money on gas and the drivers time. Even though the employee is experienced with the area and route planning itself the computer solutions is much better when it comes to efficiency and optimization. Not only is the route optimization better but it will also save you a lot of time planning your routes. Time is money!

# About StreetSync™ Basic

- Build sequenced routes for multiple vehicles
- Cluster your routes to avoid overlap and balance workloads between drivers
- Efficiently sequence routes to avoid extra miles
- Import from common file formats such as Excel
- Print numerous reports including turn-by-turns
- Export sequenced routes to your GPS devices
- Available for a small monthly flat rate
- Very easy to use – build your routes in minutes!
- Automatically updating online maps
- Integrate with TomTom Work to track your vehicles

# StreetSync™ Basic Interface

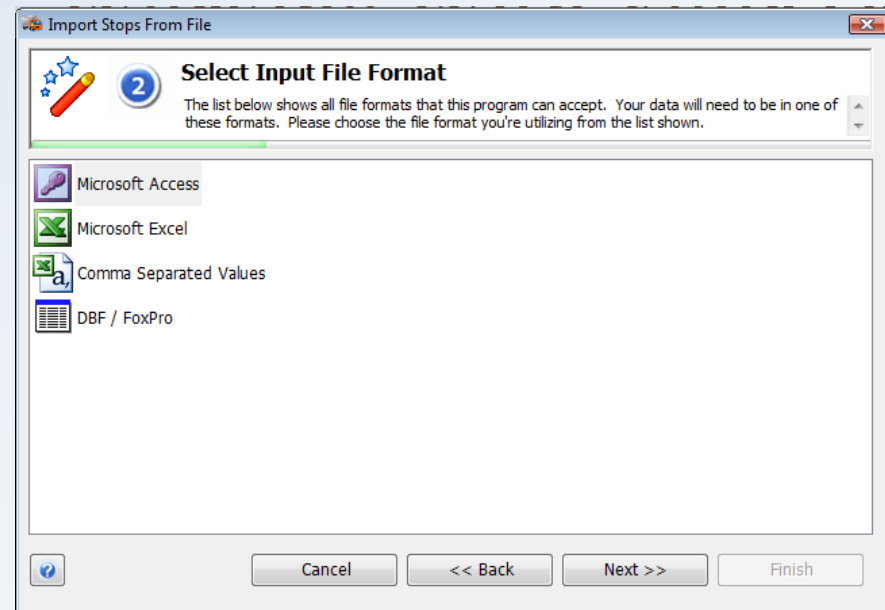
- Plan and view multi-vehicle routes on screen

The screenshot displays the 'Route Builder' application window. The interface is divided into several sections:

- Summary Table:** A table with columns for Name, Stops Count, Route Total Hours, Route Service Hours, Route Travel Hours, Total Miles, Start Location, and Start Time. The 'Totals' row shows 31 stops, 6.2 total hours, 0.3 service hours, 1.4 travel hours, 226.1 total miles, and three start locations at 07:00.
- Route Stop Listing:** A list of 10 stops with their names and addresses, such as 'Thieman Stamping' at 3740 Boyd Avenue, San Diego CA.
- Map:** A map of San Diego showing the planned routes for three vehicles (Karen Collins, Bob Jones, Joe Smith) with stops marked by colored icons.
- Navigation:** 'Previous Step' and 'Next Step' buttons with arrows and text instructions.

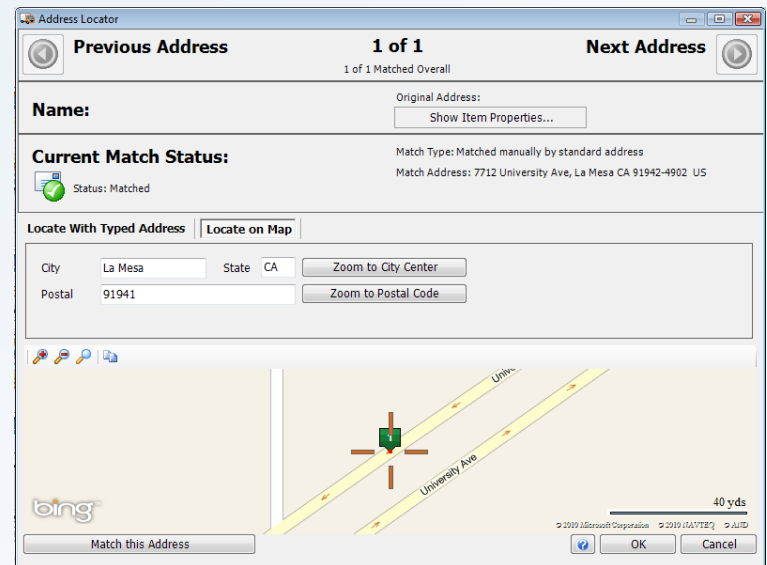
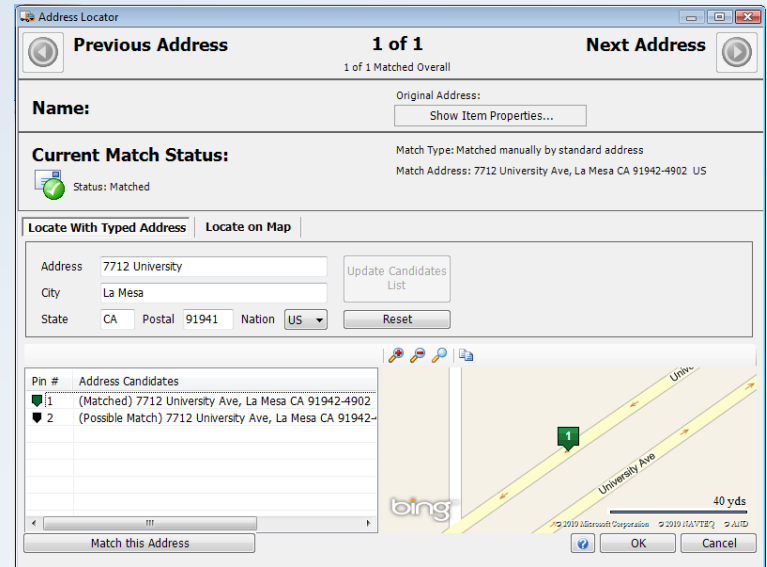
# Working With Your Data

- StreetSync is able to import and export your data via popular programs such as MS-Excel via saved profiles
- This allows you to optimize your daily dynamic work schedules while maintaining data within your existing customer management system.



# Locating Your Customers

- StreetSync has built-in tools to let you find your customers on the map. StreetSync provides address candidates and lets you pick your stop on the map
- This accuracy improves driver efficiency and boosts your customer satisfaction



# Building Routes

- Import or type-in your daily stops (up to 250 stops per day)
- StreetSync Basic will partition your workload for you on all available routes/drivers for the day and optimize each route.
- Reduce overall miles driven by reducing driver overlap and introducing optimal sequencing
- You can manually adjust your routes
- Create printed reports or export your optimized routes to certain navigation devices such as Garmin and TomTom

Name	Stop Count	Route Total Hours	Route Service Hours	Route Travel Hours	Total Miles	Start Location	End Location	Start Time
Monday	7	2.1	1.5	0.6	61.6	Warehouse	Warehouse	07:00
Tuesday	7	2.5	1.2	1.4	62.4	Warehouse	Warehouse	07:00
Monday	10	3.2	1.2	1.5	56.5	Warehouse	Warehouse	07:00
<b>Totals</b>	<b>24</b>	<b>10.4</b>	<b>4.7</b>	<b>5.7</b>	<b>264.9</b>			

#	Name	Import Address	Arrival	Departure	Service Minutes	Miles From Previous
	Warehouse	3740 Boyd Avenue #127, San Diego CA 92111 US	07:00	07:00	0.0	0.0
1	Schwietermann's Pharm...	1070 S SANTA FE AVE S, Vista CA 92084 US	07:34	07:44	10	35.7
2	Eagles Post 227	931 E VISTA WAY, Vista CA 92084 US	07:49	07:59	10	2.0
3	Marie's Clothing	771 E VISTA WAY, Vista CA 92084 US	07:59	08:09	10	0.3
4	Yu Ming Chinese Restau...	4225 OCEANSIDE BLVD, Oceanside CA 92056 US	08:18	08:28	10	2.5
5	American Legion Post ...	7720 EL CAMINO REAL J, Carlsbad CA 92009 US	08:44	08:54	10	11.0
6	Custom Art Supply Shop	7720 EL CAMINO REAL J, Carlsbad CA 92009 US	08:54	08:54	0	0.0
	Warehouse	3740 Boyd Avenue #127, San Diego CA 92111 US	09:29	09:29	23.5	

Created: May 14, 2010 5:29 PM

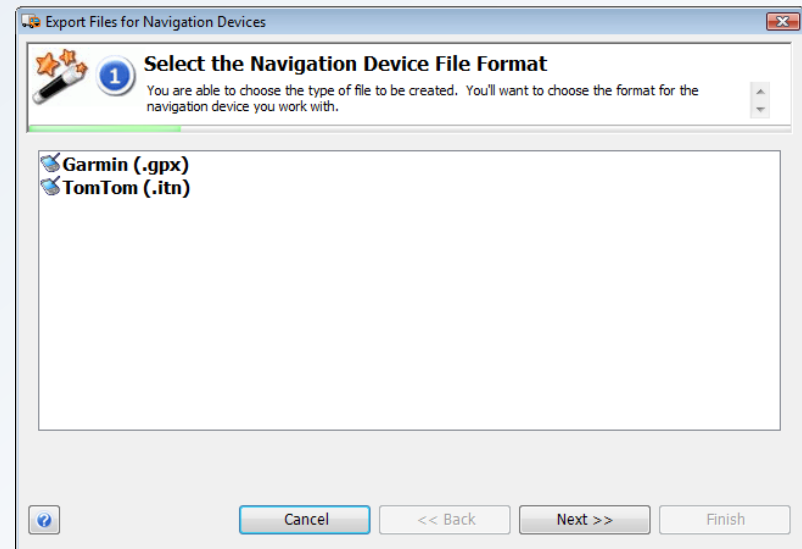
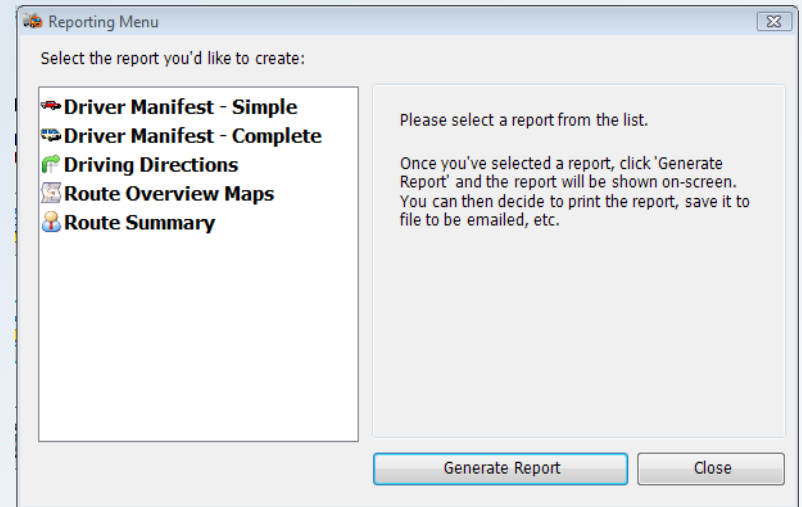
## Driver Manifest - Basic Information

Route Name:		Monday		
Stop:	Stop Name:	Arrival:	Address:	Service Mins:
	Warehouse	07:00	3740 Boyd Avenue #127, San Diego CA 92111	0
1	Schwietermann's Pharmacy	07:34	1070 S SANTA FE AVE S, Vista CA 92084 US	10
2	Eagles Post 227	07:49	931 E VISTA WAY, Vista CA 92084 US	10
3	Marie's Clothing	07:59	771 E VISTA WAY, Vista CA 92084 US	10
4	Yu Ming Chinese Restaurant	08:18	4225 OCEANSIDE BLVD, Oceanside CA 92056	10
5	Custom Art Supply Shop	08:44	7720 EL CAMINO REAL J, Carlsbad CA 92009	10
6	American Legion Post 444	08:54	7720 EL CAMINO REAL J, Carlsbad CA 92009	10
	Warehouse	09:29	3740 Boyd Avenue #127, San Diego CA 92111	0



# Exporting and Reporting

- Routing data can be exported to Excel including data such as: Route, Sequence, ETA, X & Y Coordinates, and more
- Full printable and emailable driver reports
- Export to navigation devices such as Garmin and TomTom



# Product Highlights

- Optimizes routes by balancing, clustering and sequencing stops
- Easily imports data from a spreadsheet or database and nicely fits within your existing workflow
- Includes an address locator form to correctly map client addresses
- Routes can be edited to be adjusted to your particular firm's needs
- Export your optimized routes to certain navigation devices such as Garmin, TomTom and TomTom Work
- Exporting to various file types such as Excel is supported

# The Business Case – ROI

- If you have a small fleet, and save only a few % on your overall fleet costs, StreetSync pays for itself in a matter of days
- Decreases time spent building route plans (no more Thomas Guide, zip code-sorted stacks, white board or wall map routing)
- Your fleet drives LESS miles overall due to proper planning AND intelligent driver reports
- Improved customer service

# Contact RouteSolutions Inc.

Please contact RouteSolutions to learn more and to receive a free 14-day trial version!

Website: [www.routesolutions.com/streetsynbasic.htm](http://www.routesolutions.com/streetsynbasic.htm)

Email: [info@routesolutions.com](mailto:info@routesolutions.com)

Phone: 858.541.2738

Live-Chat: <http://www.routesolutions.com/livechat.htm>

We will gladly assist you with all your questions and the set-up of your trial.

